

Membership Department  
Central Park West at 79th Street  
New York, New York 10024-5192  
www.amnh.org

PLACE SOY & FSC LOGOS HERE

General Information

HOURS

**Museum:** Daily, 10 am–5:45 pm  
The Museum is closed Thanksgiving and Christmas.  
**Space Show:** Every half hour, 10:30 am–4:30 pm  
**Research Library:** Tuesday–Thursday, 2–5:30 pm  
Hours are subject to change.

ENTRANCES

During Museum hours, visitors may enter through the subway (lower level), Central Park West at 79th Street (second floor), and the Rose Center/81st Street entrances. The Columbus Avenue entrance is open on weekends and holidays. The 77th Street entrance is closed until further notice.

TRANSPORTATION AND PARKING

**Subway:** B (weekdays) or C to 81st Street; 1 to 79th Street  
**Bus:** M7, M10, M11, or M104 to 79th Street; M79 to Central Park West  
**Parking Garage:** Open daily, 8 am–11 pm; enter from West 81st Street. Members receive a discounted rate of \$10 if entering after 4 pm. To receive this rate, you must show your Membership Card or event ticket when exiting the garage. For more information, call 212-313-7275.

FOOD SERVICE

**Museum Food Court:** Daily, 11 am–4:45 pm (lower level)  
**Café on 1:** Daily, 11 am–4:45 pm (first floor)  
**Starlight Café:** Saturday and Sunday, 11 am–4:45 pm (first floor)  
**Café on 4:** Saturday and Sunday, 11 am–4:45 pm (fourth floor)  
Hours are subject to change.

MUSEUM SHOPS

The following Museum Shops are open during regular Museum hours:  
**Main Shop** (first and second floors)  
**Dinostore** (fourth floor)  
**Extreme Mammals Shop** (fourth floor)  
**Frogs Shop** (first floor)  
**Planetarium Shop** (Rose Center, lower level)  
**Cosmic Shop** (Rose Center, second floor)  
**Online Shop** (www.amnhshop.com)

PHONE NUMBERS

Museum Information	212-769-5100
Membership Office	212-769-5606
Central Reservations	212-769-5200
AMNH Expeditions	212-769-5700
Communications	212-769-5800
Development	212-769-5151
Education	212-769-5304
Event & Conference Services	212-769-5350
Library Services	212-769-5400
Member Birthday Parties	212-769-5606
Museum Shop	800-671-7035
Natural History Magazine	646-356-6500
Patrons Circle	212-769-5153
Planetarium Information	212-769-5900
Planned Giving Office	212-769-5119
Volunteer Office	212-769-5566
Website	www.amnh.org

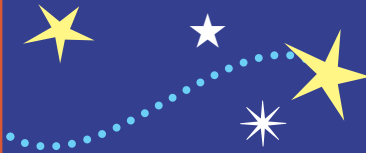
AMERICAN  
MUSEUM of  
NATURAL  
HISTORY



JOURNEY  
TO THE STARS

An All-New Space Show  
Opening July 4, 2009

*Journey to the Stars,*  
the spectacular new Space Show,  
launches visitors through  
time and space to experience  
the life and death of the stars  
in our night sky—from the  
birth of the first stars to  
the future transformation  
of our Sun.  
Narrated by Whoopi Goldberg.



# rotunda

VOL. 34 NO. 4 JULY/AUGUST/SEPTEMBER 2009

MEMBERS' NEWSLETTER



AMERICAN MUSEUM of NATURAL HISTORY





# Museum Notes

## CURRENTLY ON VIEW

**Extreme Mammals: The Biggest, Smallest, and Most Amazing Mammals of All Time**  
Through January 3, 2010  
Gallery 4  
Free for Members

Explore the surprising and sometimes bizarre world of extinct and living mammals. This exhibition examines the ancestry and evolution of an astonishing range of mammal species, showcasing such “extreme” adaptations as oversized claws and fangs, jaw-dropping speed, and massive—or miniscule—body size. *Extreme Mammals* will also investigate how some lineages died out, while others diversified to form groups of well-known mammals living today. With fascinating specimens, spectacular models, dynamic media displays, and hands-on activities, the exhibition highlights mammals’ amazing qualities and illuminates the shared ancestry that unites these diverse creatures.

*Extreme Mammals* is organized by the American Museum of Natural History, New York ([www.amnh.org](http://www.amnh.org)), in collaboration with the California Academy of Sciences, San Francisco; Canadian Museum of Nature, Ottawa, Canada; and Cleveland Museum of Natural History. Major funding for *Extreme Mammals* has been provided by the Lila Wallace-Reader’s Digest Endowment Fund. Additional generous support for *Extreme Mammals* has been provided by the Bill and Ann Ziff Foundation, the Eileen P. Bernard Exhibition Fund, and Harlan B. Levine, MD and Marshall P. Levine.

**Climate Change: The Threat to Life and A New Energy Future**  
Through August 16, 2009  
Gallery 3  
Free for Members

This timely exhibition explores the science, history, and impact of climate change on a global scale, providing a context for today’s most urgent headlines. *Climate Change* is organized by the American Museum of Natural History, New York ([www.amnh.org](http://www.amnh.org)), in collaboration with the Abu Dhabi Authority for Culture & Heritage, United Arab Emirates; The Cleveland Museum of Natural History; The Field Museum, Chicago; Instituto Sangari, São Paulo, Brazil; Junta de Castilla y



Waxy Monkey Frog | © AMNH/H. Davies

León, Spain; Korea Green Foundation, Seoul; Natural History Museum of Denmark, Copenhagen; Papalote Museo del Niño, Mexico City, Mexico; and Saint Louis Science Center. *Climate Change* is proudly presented by Bank of America. Major support has also been provided by The Rockefeller Foundation. Additional support for *Climate Change* and its related educational programming has been provided by Mary and David Solomon, the Betsy and Jesse Fink Foundation, the Linden Trust for Conservation, and the Red Crane Foundation.

**Frogs: A Chorus of Colors**  
Through January 3, 2010  
Gallery 77  
Members’ tickets are \$12 adults; \$7 children

With more than 200 live frogs shown in recreated habitats, complete with rock ledges, live plants, and waterfalls, this delightful exhibition introduces visitors to the colorful and diverse world of amphibians. Featuring approximately 25 species from around the world, the exhibition explores the evolution and biology of frogs, their importance to ecosystems, and the threats they face in the world’s changing environments. Interactive stations throughout the exhibition

invite visitors to activate recorded frog calls, view videos of frogs in action, and test their knowledge about frogs. This exhibition is presented with appreciation to Clyde Peeling’s Reptiland.

**Saturn: Images from the Cassini-Huygens Mission**  
Through July 26, 2009  
IMAX Corridor

This stunning exhibition reveals details of Saturn’s rings, moons, and atmosphere with images sent over half a billion miles by the Cassini spacecraft. The support of the National Aeronautics and Space Administration is appreciated. Special thanks to the Cassini imaging team, especially those scientists at Cornell University’s Department of Astronomy, along with the staff of Cornell University photography. The Eastman Kodak Company of Rochester, New York, printed the images.

**On Feathered Wings**  
Through August 30, 2009  
Akeley Gallery

This exhibition brings together the work of renowned wildlife photographers whose artistry showcases the majesty of birds in flight.

The presentation of both *Saturn* and *On Feathered Wings* at the American Museum of Natural History is made possible by the generosity of the Arthur Ross Foundation.

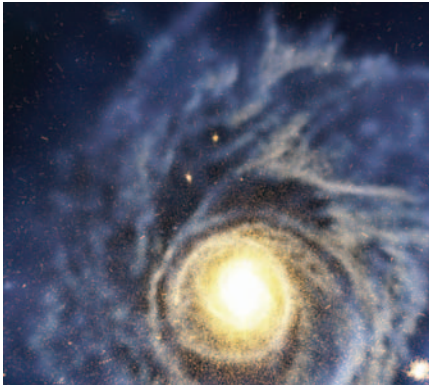
**SLEEPOVER PROGRAM**  
**A Night at the Museum**  
Call 212-769-5200, Monday–Friday, 9 am–5 pm  
\$119 per person for Members

After-hours at the Museum: as the doors close and the lights dim, adventurers head out on flashlight tours before bedding down surrounded by Museum icons.

**HAYDEN PLANETARIUM SHOWS**  
**Journey To The Stars**  
Opens July 4, 2009

*Journey to the Stars*, a spectacular new Space Show, launches visitors through time and space to experience the life and death of the stars in our night sky. Travel 13 billion years into the past, when the first stars were born, and witness brilliant supernovas that sent new kinds of matter coursing through the universe, into the atoms of our own bodies and the air we breathe. Visit the heart of our fiery Sun, and glimpse its distant future as it transforms into a massive red giant. Tour familiar stellar formations, explore new celestial mysteries, and discover the fascinating, unfolding story that connects us all to the stars.

*Journey to the Stars* was developed by the American Museum of Natural History, New York ([www.amnh.org](http://www.amnh.org)) in collaboration with the California Academy of



© AMNH

Sciences, San Francisco; GOTO INC, Tokyo, Japan; Papalote • Museo del Niño, Mexico City, Mexico and Smithsonian National Air and Space Museum, Washington, D.C. *Journey to the Stars* was created by the American Museum of Natural History, with the major support and partnership of NASA, Science Mission Directorate, Heliophysics Division. Made possible through the generous sponsorship of Lockheed Martin Corporation. And proudly sponsored by Accenture. Super-computing resources provided by The Texas Advance Computing Center (TACC) at the University of Texas at Austin. **IMAX MOVIES** *Samuel J. and Ethel LeFrak Theater* For films and showtimes, visit [www.amnh.org](http://www.amnh.org) or call 212-769-5100.

**Wild Ocean**  
Experience the massive feeding frenzy that takes place each year in the oceans of South Africa as billions of fish migrate up the KwaZulu-Natal Wild Coast. Breaching whales, frenzied sharks, herding dolphins, and diving gannets compete in an epic underwater struggle for survival.

**Beavers**  
Shot on location in the Canadian Rocky Mountains and Ontario, Canada, this fascinating film follows one family as it overcomes dangers, grows, plays and proves why the beaver is one of nature’s great engineers. With breathtaking underwater photography, viewers also travel inside the lodge for a rare, intimate look at the habitat of these charming, industrious creatures.

**AND DON’T MISS...**  
**AMNH Birthday Parties**  
Celebrate this year’s birthday at the American Museum of Natural History! With four exciting party themes: **Dinosaur Discoveries, Cosmic Blast-off, Underwater Treasures** and **Safari Adventures** your party is sure to be a hit! The birthday child and guests will experience an unforgettable



journey that will make this party one to cherish! For ages 4 and up. Available every day to Contributor and higher-level Museum Members only. For details and to request a date, visit [www.partymakers.com](http://www.partymakers.com) or call 212-288-7112.

COVER: Students present their projects for *Urban Advantage* 2008. | © AMNH/R. Mickens

**RELOCATION OF ROSE CENTER MEMBERSHIP DESK**  
The Membership Desk at the Rose Center Entrance (81st Street) is now located on the first floor, directly to your right as you enter the building.

**SAVE A TREE**  
The current issue of *Rotunda* is now available online! Download it at [www.amnh.org](http://www.amnh.org). If you’d like to stop receiving paper copies, please email [members@amnh.org](mailto:members@amnh.org).

**rotunda**  
ISSN 0194-6110  
USPS Permit #472-650  
Vol. 34, No. 4, July/August/September 2009  
Lewis W. Bernard, *Chairman*  
Ellen V. Futter, *President*  
Lynn DeBow, *Senior Vice President for Development and Membership*  
Rosemary Caulk, *Director of Membership*  
*Rotunda* is published bimonthly, except for a combined issue in July/August/September and a single issue in December, by the Membership Office of the American Museum of Natural History, Central Park West at 79th Street, New York, NY 10024-5192. Phone: 212-769-5606. Web address: [www.amnh.org](http://www.amnh.org). Museum Membership of \$70 per year and higher includes a subscription to *Rotunda*. © 2007 American Museum of Natural History. Periodical postage paid at New York, NY, and at additional mailing offices. Postmaster: please send address changes to *Rotunda*, Membership Office, AMNH, at the above address.



# Urban Advantage: A Seed Takes Root

If imitation is the sincerest form of flattery, the American Museum of Natural History stands roundly complimented. The Museum's innovative Urban Advantage Middle School Science Initiative to augment science education for public school-children has inspired pilot programs in Denver and Miami for the 2009–2010 school year; and feasibility studies in Boston, Buffalo, and Cleveland.

"The Urban Advantage partnership has had tremendous impact in New York City and we are deeply gratified that it is now spreading to cities across the country," said Ellen V. Futter, President of the American Museum of Natural History. "With the involvement of the partner cities now investigating and piloting their own local versions, this pioneering program has the opportunity to achieve national scale, and thereby make a very real difference in improving the teaching and learning of science throughout the country."

Just as the name suggests, Urban Advantage was founded upon the conviction that urban settings offer unique opportunities for enrichment outside the classroom. When AMNH created and implemented the New York

City program in 2004, it brought together such collaborators as the Brooklyn Botanic Garden, the New York Botanical Garden, the New York Hall of Science, the Queens Botanical Garden, the Staten Island Zoo, the Wildlife Conservation Society's Bronx Zoo, the New York Aquarium, and the New York City Department of Education, with leadership funding from the New York City Council. The program currently serves all five boroughs, some 25,000 students, and 250 teachers in 150 schools—about 30 percent of the city's public schools with an 8th grade.

Working in partnership with the Goldman Sachs Foundation, whose support has made possible UA's national expansion, the Museum has been able to introduce this successful educational model into cities nationwide.

In their planned pilot programs for the 2009–2010 school year, the Denver Public Schools, along with Aurora Public Schools and Adams County School District 14, are working with the Denver Museum of Nature and Science as their lead institution, and the Miami-Dade County Public School is collaborating with both the Zoological Society of Florida and the Miami Museum of Science.

These cities' collaborating institutions commit to designing and conducting high-quality professional development for teachers over several years; honoring student, family, and class-visit admission vouchers; partnering with one or more UA demonstration schools, and sending representatives to visit a variety of schools each year in support of UA programs.

"UA's comprehensive model, with students, teachers, and parents all involved, is very appealing," says Polly Andrews, Director of Youth and Teacher Programs at the Denver Museum of Nature & Science. "And the national network provides us with opportunities to compare challenges, brainstorm solutions, and learn from colleagues in similar situations. This is very important."

The need for improving science literacy among students preparing for high school is an urgent one. In April of this year, *New York Times* columnist Thomas Friedman reported that after decades of dominating the world in education, the U.S. has fallen way behind in the number and quality of our high school graduates. Included in his evidence was the 2006 Program for International Student Assessment that measured applied learning and problem-solving skills in 15-year-olds: the U.S. was number 25 out of 30 industrialized countries in math and number 24 in science.

Tellingly, in a 2005 report called "How Students Learn Science in the Classroom," the National Research Council concluded that a deep understanding of science is grounded in *doing* science. Urban Advantage, now run at AMNH under the umbrella of the David S. and Ruth L. Gottesman Center for Science Teaching and Learning, gives students rich resources for conducting hands-on investigations called "exit projects"—a city-wide requirement for 8th grade students—that engage them in science as a way of thinking, rather than simply as a body of knowledge.

"Urban Advantage is all about scientific inquiry," explained Dr. Jim Short,



Students at the Urban Advantage Science Expo | © AMNH/R. Mickens

Director of the Gottesman Center for Science Teaching and Learning at AMNH. "UA focuses students and teachers on engaging in scientifically oriented questions, gathering data, and developing explanations based on evidence. Learning science becomes more than understanding a body of knowledge, science is also a process for investigating how we know what we know. We help students do science, think like scientists, and behave like scientists."

The NYC Department of Education defines four types of exit projects: controlled experiments; field studies; design projects; and secondary research in which students work with scientific data sets obtained by others. UA partner institutions can serve as the "fields" where observations are made, labs offering hands-on experiences, or simply as valuable sources of inspiration for hypotheses to be tested and topics to be explored.

Every year, AMNH sponsors a Science Expo in which students' exit projects are exhibited under the blue whale in the Milstein Hall of Ocean Life—a source of pride for all involved. Typical exit projects ask such questions as how much bacteria can be found on everyday objects used in school? Which monkey is more active: the White-Faced Saki or the Cotton-Top Tamarin? How do different types of music affect concentration? Does the type of plate boundary determine the magnitude of earthquakes? What is the effect of room temperature on the life span of a bubble?

Passes to partner institutions for students and their families are another important feature of the program. Over the past four years, nearly 30,000 UA students and their family members have taken advantage of the admission vouchers.

"I was surprised that many of my students don't visit the institutions in the city," said Christina Kola, a UA teacher at Middle School 45 in the South Bronx. "I have students who have never been to the Bronx Zoo. They live across the street and have never been there."

To further encourage parental involvement, family guidelines for the program are available in eight languages besides English: Chinese, Korean, Haitian Creole, Arabic, Russian, Bengali, Urdu, and Spanish. UA Partner institutions provide workshops for parent coordinators about the eighth grade exit project and their role in helping teachers use cultural institutions to support science investigations. Parent coordinators help teachers plan and carry out activities such as weekend family field trips to UA Partner institutions, class trips, family science nights and science fairs, and exit project workshops.

"Parents are their children's first teachers," said Rachel Oechsner, assistant principal of Intermediate School 259 in the Bay Ridge neighborhood of Brooklyn. "We try very hard to get parents involved

because we realize that the support has to come from home."

The final, critical component of the Urban Advantage model is professional development for teachers—addressing what has been identified as a severe shortage of qualified science teachers in the city. Teachers receive a stipend to spend time after school and on weekends learning how to help students design experiments, attending sessions on how to weave science resources into classroom instruction, becoming more familiar with UA's partner institutions, and even conducting their own exit projects.

So far, the results have been exceedingly positive. According to a preliminary evaluation of UA in New York, 83 percent of participating teachers saw signs of improvement in the quality of UA students' knowledge of science content, and 80 percent reported increased understanding of the process of scientific investigation.

"Urban Advantage introduced me to things I didn't think about, and my teaching has completely changed," said Kola. "Hopefully, if one kid can start thinking, 'Well, maybe science is interesting; maybe that's what I want to do, that's the topic I want to learn about,' it will be worth it."

Support for the American Museum of Natural History's Urban Advantage Program is provided by the Goldman Sachs Foundation.



Students present their 8th grade exit projects for Urban Advantage 2008. | © AMNH/R. Mickens



Urban Advantage students demonstrate their projects. | © AMNH/R. Mickens



# Members' Programs

Programs are available to Members only, unless a non-Member's price is given.

For tickets, call 212-769-5200, Monday–Friday, 9 am–5 pm, or visit [www.amnh.org](http://www.amnh.org). Please have ready your credit card, your Membership number, and the program code. All Members' programs require advance registration.

## EXPEDITIONS

### Fossils! Fossils! Fossils!

Saturday, July 11 MO071109  
8:30 am–5 pm  
\$85 (includes transportation by private coach)

Pack your collecting bag, old sneakers, and lunch, and join Carl Mehling, Fossil Collections Manager in the Division of Paleontology, for an expedition to Big Brook in Monmouth County, New Jersey.

### West Point: The Geology and History

Thursday, July 16 MO071609  
9 am–5 pm  
\$95 (includes transportation by private coach)

Join geologist Sidney Horenstein on this day trip to West Point and Constitution Island, which is home to some of the oldest rocks in our region, along with other historic features that date back to the Revolutionary War.

### Birds of Jamaica Bay

Saturday, July 18 MW071809  
9 am–3 pm  
\$36

Renowned as a prime birding spot, over 325 species have been recorded at the Jamaica Bay Wildlife Refuge during the last 25 years. Observe some of the thousands of water, land, and shorebirds that stop here during their migration, and see numerous bird species—including the Glossy Ibis, Osprey, Tern, Laughing Gull, Oystercatcher, and more—that breed in the area during the summer months.

### Tracking Dinosaurs in Northern New Jersey

Wednesday, July 22 MO072209  
9 am–5 pm  
\$85 (includes transportation by private coach)

Join Museum paleontologist Paul Nascimbene on a visit to two sites

where the trackways of dinosaurs and other ancient creatures can be found.

### Sail on the Clearwater

Friday, July 24 MO072409  
6–9 pm  
\$75  
Limited space is available; please register early.

Join us for a sunset sail aboard the historic *Clearwater*, a 106-foot wooden sailing sloop, designed after 18th- and 19th-century Dutch ships, to learn more about the cultural heritage of the area and the ecology of the Hudson River.

### From Quarry to Pleasure Ground: The Art of the Geological Landscape

Saturday, August 15 MO081509  
8:30 am–6 pm  
\$95 (includes transportation by private coach)

Landscape architect Donna Walcavage leads this journey to two extraordinary locations where art meets nature. See *Opus 40*, a magnificent sculpture in the Catskills near Saugerties, New York, and Manitoga, the unique home and landscape of designer Russel Wright, in Garrison, New York. Don't forget to bring your camera, binoculars, and lunch.



© S. Marsel



Natural bridge chasm | National Bridge State Park

### Rails & Trails in the Berkshires

Saturday, September 19 MO091909  
8:30 am–6:30 pm  
\$115 (includes buffet lunch and transportation by private coach)

At Western Gateway Heritage State Park in North Adams, Massachusetts, step back in time with former docent Robert Campanile and experience history from the perspective of a small mill town in early America. Visit an exhibit on the construction of the Hoosac Tunnel, a major feat in geological engineering in the mid-19th century. Tour the Natural Bridge State Park, a place that contains clues to our planet's complex evolution. Witness the tremendous power of flowing water from the 300-foot natural white marble bridge and its associate walkways.

### Paleozoic Fossils of the Delaware Valley

Saturday, October 3 MO100309  
8:30 am–6 pm  
\$95 (includes transportation by private coach)

Bring your collecting bags and lunch and join Museum paleontologist Paul Nascimbene on this special collecting trip to several outcrops in Western New Jersey and Eastern Pennsylvania where ancient Paleozoic fossils of sea creatures—including brachiopods, corals, and trilobites—can be found. Surface collecting is permitted for Members on this trip.



Turtle Pond, Central Park | © AMNH/C. Chesek

As a bonus, you will enjoy the natural autumn beauty of the area.

### Exploring Connecticut's Natural Treasures

Saturday, October 17 MO101709  
9 am–6 pm  
\$130 (includes lunch, transportation by private coach, and all admission fees.)

Ethnobotanist E. Barrie Kavasch guides this walking tour through the colorful Northwest Hills of historic Kent, Connecticut. Visit the Sloane-Stanley Museum and view early American tools and artifacts, take a guided tour of the Connecticut Museum of Mining



© R. DiGianigi

and Mineral Science, and explore the Kent Greenhouse and Gardens to examine local plants and herbs. Lunch will be held at Kent's legendary Fife'n Drum Restaurant.

## WALKING TOURS

### Reunion with Trees Evening Walks

Tuesday, July 28 MW072809  
Tuesday, August 4 MW080409  
\$30

Become acquainted with the trees of Central Park on this evening walk with Sidney Horenstein. Delve further into the trees' unique botanical features and evolutionary history. Learn about the links these plants have with the adventures of the early explorers and travelers who first collected them.

### Geology and History of Riverside Park and Drive

Thursday, August 27 MW082709  
6:30–8 pm  
\$30

Join geologist Sidney Horenstein on this walking tour to learn how geology

influenced the design of Riverside Park and Drive and the development of the area. Heading north from 135th Street, the tour will also cover Riverbank State Park, built on top of a sewage treatment plant.

## HALL TOURS

### The Solar System: Earth and its Fascinating Cosmic Neighbors

Saturday, September 12 MH091209  
3–4:30 pm  
Free

Our solar system is as fascinating and filled with wonders as the distant quasars, black holes, and neutron stars. Join tour guide Larry Bassett for a speedy journey through the solar system. As you walk through the Hall of the Universe and the Hall of Planet Earth, you'll learn about new discoveries and the search for life on other planets.

### Weights and Measures

Sunday, September 27 MH092709  
3–4:30 pm  
Free

Every civilization had its own method of accounting: the Sumerians had their clay models, the Incas their Quipu. Eratosthenes measured the circumference of the Earth in 200 BC—and today we measure the expansion of the universe. Travel through the Museum's halls with tour guide Judith Cubbon to weigh, measure, and count everything.

### Windows on Nature: Hall of North American Mammals and Ocean Life

Wednesday, October 7 MH100709  
6:30–8 pm  
\$35

The American Museum of Natural History houses some of the world's most superb examples of habitat dioramas. With Stephen C. Quinn, Senior Project Manager of Exhibitions,



artist, naturalist, and author of *Windows on Nature: The Great Habitat Dioramas of the American Museum of Natural History*, tour the Hall of North American Mammals and the Milstein Hall of Ocean Life to learn about the history of the dioramas, how they were made, and who created them.

**Windows on Nature: North American Birds and African Mammals**  
Wednesday, November 18 MH111809  
6:30–8 pm  
\$35

Tour the Sanford Hall of North American Birds and the upper level of the Akeley Hall of African Mammals with Stephen C. Quinn, Senior Project Manager of Exhibitions, artist, naturalist, and author of *Windows on Nature: The Great Habitat Dioramas of the American Museum of Natural History*. Learn about the history of

the halls' dioramas, how they were made, and who created them.

**PREVIOUSLY LISTED**

*(Space may be available for the following program)*

**Hudson Valley Garden Tour**  
Thursday, June 25 MO062509  
9 am–6 pm  
\$95 (includes transportation by private coach)

Spend a day touring three remarkable gardens of the Hudson Valley. First, visit Kykuit, the Rockefeller estate near Sleepy Hollow, which is a landmark known for its spectacular scenery, architecture, art, history, and, of course, remarkable gardens. Then, view the elegant formal gardens of the Lasdon Park and Arboretum in Somers, boasting petunias, nicotiana,



Center Fountain at Lasdon Memorial Garden | © Lasdon Memorial Garden

and alyssum, among other flowers. Finally, tour Stonecrop Gardens, originally the home of Anne and Frank Cabot located in Cold Spring, where you'll be greeted by a thicket of blooms.

# The Benefits of a Gift of Life Insurance

Many people buy life insurance to provide for their young children or to ensure payment of a home mortgage. Many years later, the children are grown, or the mortgage has been paid off. If you now own more than enough life insurance, or if you have a policy that is no longer necessary, please consider making it a gift to the Museum.

Giving a life insurance policy is an easy and inexpensive way to make a substantial gift to the Museum. All you have to do is make us the beneficiary and irrevocably transfer the policy to us. We will eventually use the proceeds to help us build on our contributions in exploration and discovery in the natural sciences, as well as in public education.

If the policy has a cash surrender value, your income tax charitable deduction is generally slightly

above the cash surrender value. Any premiums you pay on the policy after you transfer it to us qualify as a charitable deduction for the year in which the premium is paid.

You can also retain ownership of the policy and simply name the Museum the policy's beneficiary. In that case, you're not entitled to an income tax deduction, but we will eventually receive the proceeds if you don't change the beneficiary.

Another way to support the Museum is to name us the contingent beneficiary of your life insurance policy so that we will receive the proceeds if there are no surviving close family members.

Employees can receive group-term life insurance coverage up to \$50,000 tax-free. The value of the premiums paid to provide coverage over that amount, as determined by IRS tables, is generally taxed to the employee.

Under an important exception, however, the value of group-term insurance protection over \$50,000 is not taxed when employees name a charity, such as the Museum, as the beneficiary of the excess. There is no income tax deduction for this gift, but employees can avoid paying income tax on the value of the premiums needed to furnish the excess coverage.

We urge you to speak to your attorney or financial advisor to see if you have enough life insurance and to discuss the benefits of giving a policy to the American Museum of Natural History.

For more information, please contact: Arthur Markowitz, Esq., Director of Planned Giving, at (212) 769-5119 or [plannedgiving@amnh.org](mailto:plannedgiving@amnh.org). There is no cost or obligation to you.

## Have a Seat

Honor a loved one or commemorate an important event with a Seat for Science.

By naming a seat in one of the American Museum of Natural History's spectacular state-of-the-art theaters, you will help carry on the Museum's long tradition of scientific research and education. In recognition of your generosity, a plaque will be installed on the seat of your choice.

With a donation of \$2,500, you will have an opportunity to name a seat in the LeFrak IMAX Theater, the Museum's largest and most popular theater facility. Its three-story screen provides

education and entertainment to thousands of visitors daily.

With a donation of \$5,000, we invite you to name a seat in the stars! A beloved landmark and major attraction for New Yorkers, the Hayden Planetarium provides starry-eyed children and adults a glimpse into the outer reaches of the universe.

Naming a seat provides support for the American Museum of Natural History's continued efforts to research, interpret, and disseminate knowledge about our natural world.

For more information about naming a Seat for Science, contact our Development Office by phone at 212-769-5929 or by email at [development@amnh.org](mailto:development@amnh.org).



© AMNH/D. Finnin

**Name a Seat for Science and watch our new Space Show, *Journey to the Stars*, from your seat! Seat donors receive six complimentary passes to the Space Show.**



© AMNH/D. Finnin



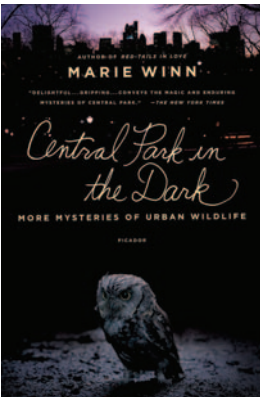
# Public Programs

These programs are available to the general public.  
Call 212-769-5200 for information and tickets.

## Central Park in the Dark with Marie Winn

Wednesday, July 8 ELo70809  
7 pm  
Linder Theater  
\$15 (\$13.50 Members, students, senior citizens)

Explore Central Park's nocturnal wildlife with naturalist Marie Winn. An illustrated talk is followed by a guided walk through the park, and a book signing is included.



## Adventures in the Global Kitchen: Beer

Tuesday, July 14 ELo71409  
6:30 pm  
Linder Theater  
\$20

With Garrett Oliver, Brewmaster at the Brooklyn Brewery and author of *The Brewmaster's Table*, learn about the history of brewing beer. Tastings are included.

## Evening Bat Walks in Central Park

Friday, July 17 EW071709A  
Friday, July 24 EW072409B  
Friday, July 31 EW073109C  
8:30 pm  
\$25  
Enrollment is limited.

Join Chanda Bennett, AMNH, Danielle Gustafson, and other members of the

New York Bat Group for a bat walk through Central Park.

Note: You must register at least one week in advance.  
Rain date is Friday, August 7. Meet on the Museum steps on Central Park West at 79th Street.

## Wild, Wild World: Awake at Night

Saturday, July 25 ECo72509A  
11 am–12 pm ECo72509B  
1–2 pm  
Linder Theater  
\$8 children; \$10 adults

Get an up-close look at some fascinating nocturnal animals with Rob Mies, Organization for Bat Conservation.

## WEEKEND WORKSHOPS IN THE SACKLER LAB: FIRST CULTURE

### First Tools: A Demonstration of the First Stone Tool Technologies

Sunday, July 12  
Session I 1–2:30 pm  
Session II 2:30–4 pm  
Free with Museum admission  
Sackler Educational Lab  
For families with children ages 10 and up

Watch archaeologist Dr. Bill Schindler, Washington College, bring the earliest tool technologies to life with real artifacts and stone tool replicas.



Garret Oliver

## TUESDAYS IN THE DOME

All programs take place at 6:30 pm in the Hayden Planetarium Space Theater.

### Virtual Universe Journey through the Milky Way

Tuesday, July 7 HMo70709

Journey to the furthest reaches of our galaxy to learn about amazing scientific discoveries.

### Motion through the Universe

Tuesday, August 4 HMo80409

Learn about the history and future of the universe from the way planets, moons, nearby stars, distant halo objects, and galaxies move.

### Celestial Highlights Family Astronomy Fun-damentals

Tuesday, July 28 HMo72809

Bring your budding astronomer to this family-friendly presentation.

### Look Ma...No Rings (or Moons)!

Tuesday, August 25 HMo82509

Hear about the unusual circumstances that will lead to the temporary vanishing of Saturn's rings and Jupiter's moons.

### A New Path to the Moon and Beyond Using Gravitational Chaos

Monday, July 20 HLo72009  
7:30 pm  
Hayden Planetarium Space Theater  
\$15 (\$13.50 Members, students, senior citizens)

Learn about weak stability boundary theory, the alternative approach to space travel developed by Ed Belbruno in the 1980s.

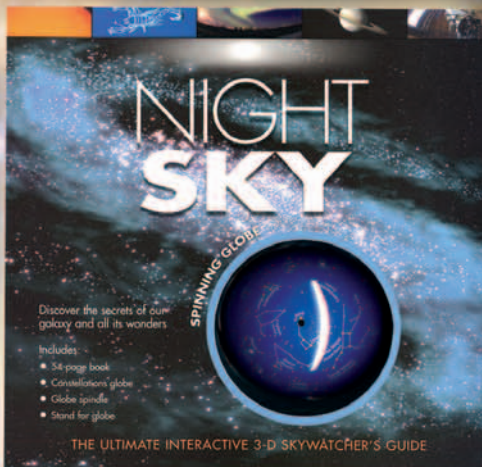
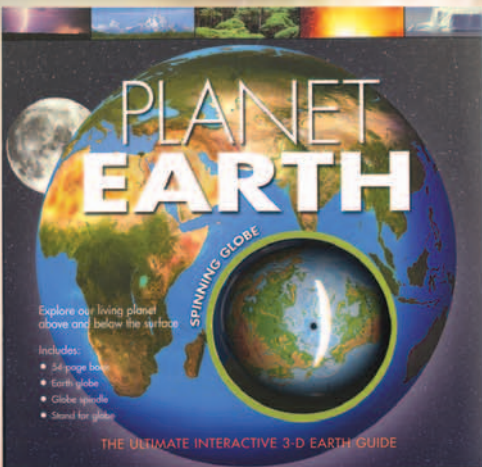
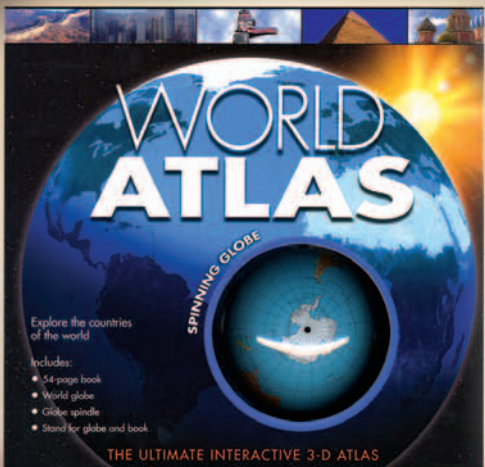
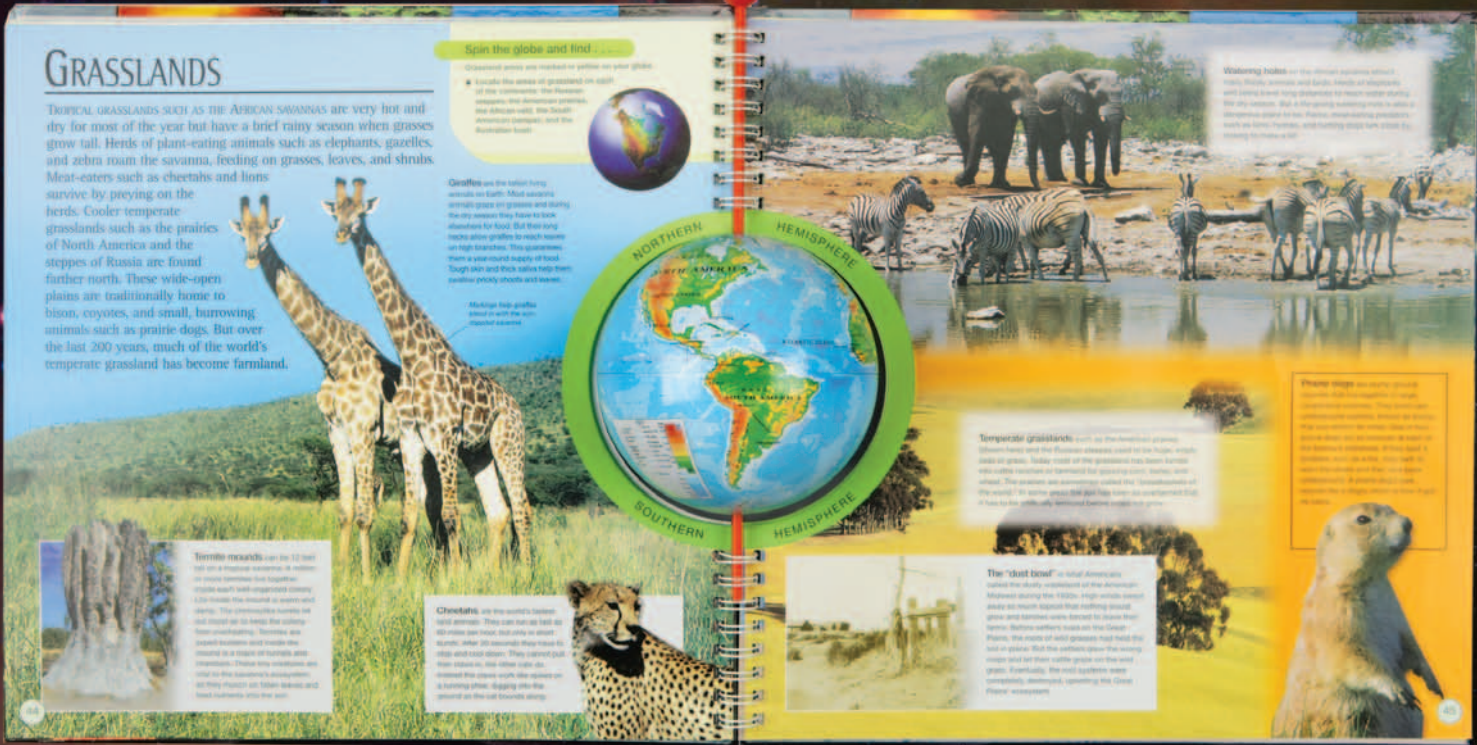
This program is supported, in part, by a grant from the Newman's Own Foundation.

AMERICAN MUSEUM OF NATURAL HISTORY

# MUSEUM SHOP

## GO GLOBAL

a gifted idea.



Each book contains a themed globe that gives its respective subject the correct spin! Ideal for children age 8 and up, they come with 54 fact-filled, beautifully illustrated pages and a stand and spindle for separate display.

To place orders, call our Personal Shopper at 1-800-671-7035 or shop at

[www.amnhshop.com](http://www.amnhshop.com)

Public programs are made possible, in part, by the Rita and Frits Markus Fund for Public Understanding of Science.